

# Washington's Weather Vane

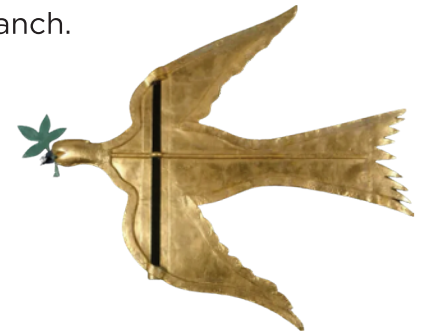
**Background Information:** During the summer of 1787, George Washington was attending the Constitutional Convention in Philadelphia. While there, Washington hired a Philadelphia craftsman named Joseph Rakestraw to build a weathervane, which was to be placed on top of the cupola of the Mansion at Mount Vernon. Washington's instructions for the weathervane's design were clear, the design would feature a bird holding an olive branch.

## Main Ideas:

- Weather vanes show which direction the wind is coming from.
- Washington's weather vane was decorative, but it was also a practical tool to help record the weather.
- Washington recorded the weather each day in his weather journals.

## Skills:

- Fine Motor Skills
- Primary source analysis



## Questions to Consider:

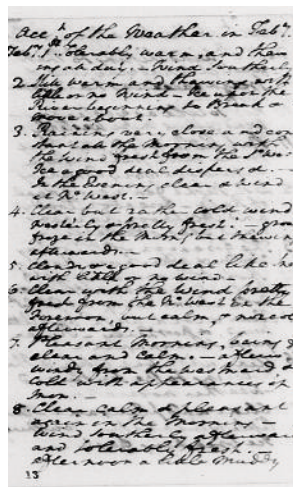
1. Why is predicting the weather important?
2. How do we tell the weather today?



Washington's  
Order



Edward  
Savage  
Painting



Washington's  
Weather Diary

## Supplies:

- Weather vane template pieces
- 2 beads
- 1 paper clip
- 1 straw
- Scissors
- Tape or glue
- Coloring Supplies

## Explore more!

Use the above primary sources and [the Mount Vernon website](#) to learn more about Washington's weather vane.

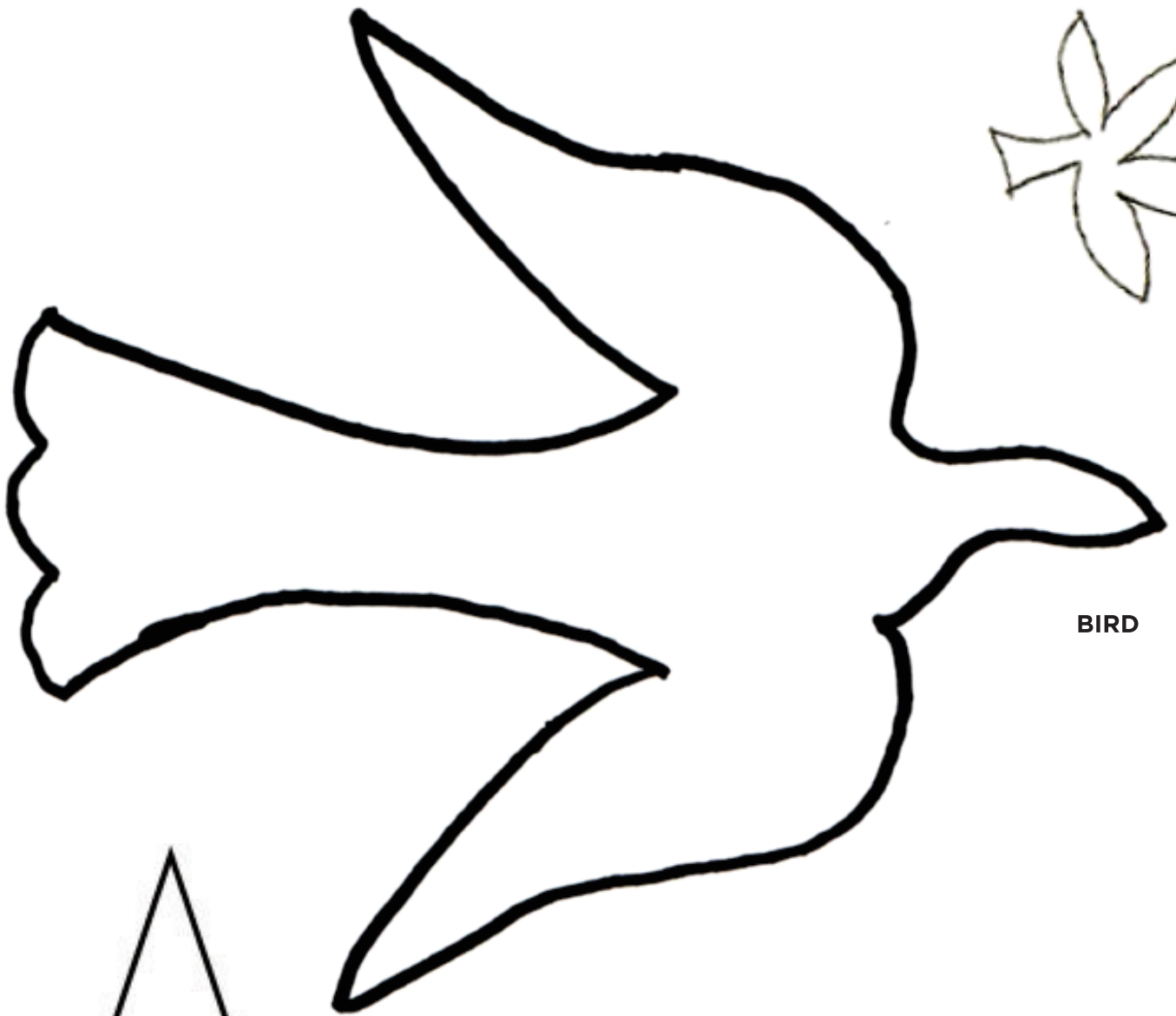
# Directions



1. Color the bird, arrows, and compass.
2. Cut out the bird, arrows, and compass. Glue the green olive branch to the beak of the bird.
3. With an adult's help, bend the paperclip so that it is straight.
4. Cut slits into the end of the straw and slide an arrow piece at each end.
5. Insert the paperclip into the pencil's eraser and slide the pieces on in this order: compass template, one bead.
6. Slide the paperclip through the hole in the middle of the straw and slide the last bead down the wire so that it is on top of the straw.
7. Tape the cut-out bird onto the end of the paperclip.
8. Take your weather vane outside. Find north with a compass and use your weather vane to find out which direction the wind is blowing.



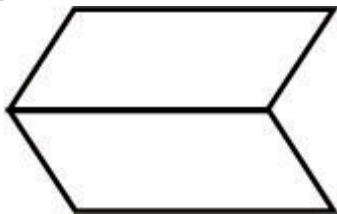
OLIVE  
BRANCH



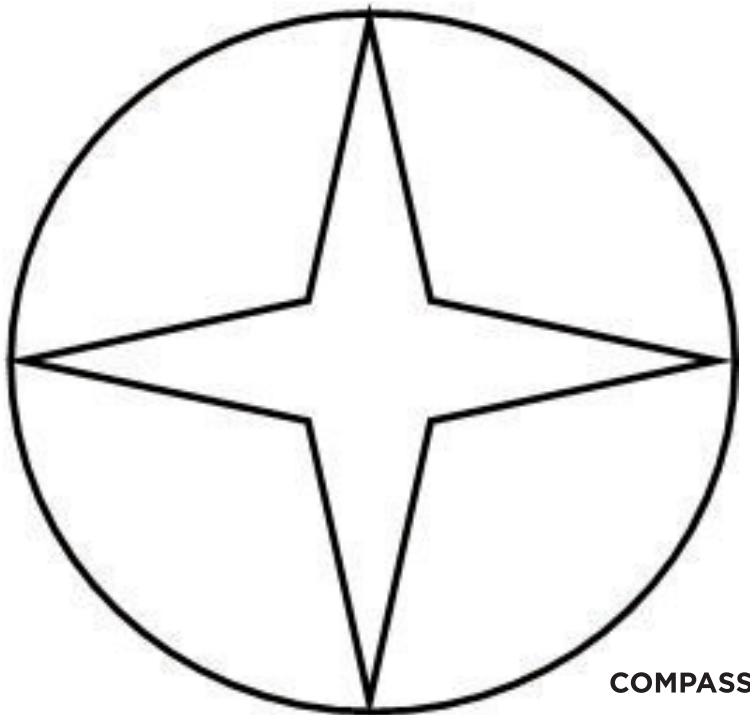
BIRD



ARROW  
PIECE 1



ARROW PIECE 2



COMPASS